

## Molecular, Morphological and Anatomical Characterization for Some Egyptian Durum Wheat

Osama M. Saleh<sup>1</sup>, Nahla Hamiedeldin<sup>1</sup>, Ahmed F. Khafaga<sup>1</sup> and Rashad M. Shoaib<sup>2</sup>

<sup>1</sup> National Centre for Radiation Research and Technology (NCRRT), Atomic Energy Authority, Nasr City, Cairo, Egypt.

<sup>2</sup> National Research Centre (NRC), Dokki, Giza, Egypt.

**Abstract:** Grains of eight durum wheat cultivars were tested for identification of genetic relationship among molecular, anatomical and morphological levels. On the molecular level, two techniques have been used; Randomly Amplified Polymorphic DNA (RAPD) and Inter Simple Sequence Repeats (ISSR). Amplification of RAPD primers showed different numbers of fragments ranged from six to thirteen fragments. Percentage of polymorphism ranged from 0% to 100%. The highest similarity value recorded was 91%, while the lowest similarity value was 69%. Amplification of ISSR primers showed different numbers of fragments ranged from six to twelve fragments. The highest similarity value recorded was 91%, while the lowest similarity value was 68%. The grains coat morphology was reticulated in all taxa. There were variations with regard to the alignment and the shape of network and architecture of interspaces enclosed by raised line. Stem and leaf are important organs consisting of storage, transportation and mechanical tissues and is closely related to yield. These tissues similarity used for detect the genetic relationship between the cultivars.

[Osama M. Saleh, Nahla Hamiedeldin, Ahmed F. Khafaga and Rashad M. Shoaib. **Molecular, Morphological and Anatomical Characterization for Some Egyptian Durum Wheat.** *Life Sci J* 2017;14(2):91-104]. ISSN: 1097-8135 (Print) / ISSN: 2372-613X (Online). <http://www.lifesciencesite.com>. 13. doi:[10.7537/marslsj140217.13](https://doi.org/10.7537/marslsj140217.13).

**Key words:** Durum wheat, RAPD, ISSR, Morphology, Anatomy.

### Introduction

Wheat is the most widely grown cereal in the world (FAO, 2003). It is the staple food for 35% of the world's population, and is becoming increasingly important in the developing world (Cimmyt, 2003). The estimation of genetic diversity at the DNA level improves the identification and characterization of primary and secondary centers of diversity (Serret *et al.*, 1997; Chowdhury and Slinkard 2000). Knowledge of diversity patterns will also allow breeders to better understand the evolutionary relationships among accessions, to sample germplasm in a more systematic fashion, and to develop strategies to incorporate useful diversity in their breeding programs (Bretting and Widrechner 1995). Using molecular marker in wheat cultivar characterization now became more stable and accurate than morphological and cytogenetic traits which at present are unstable, time-consuming, and affected by environmental conditions, (Boggini *et al.*, 1990). Using the RAPD method for detection of polymorphism among wild and cultivated tetraploid wheat and genetic diversity is very important in reducing genetic vulnerability during plant breeding efforts (Joshi and Nguyen, 1993). In order to estimate the genetic diversity, molecular markers provided excellent tools (Sofalian *et al.*, 2008). Inter simple sequence repeats (ISSRs) are one of the DNA-based markers that have become widely used in various areas of plant research (Karaca and Izbirak, 2008). ISSR technique exploits the abundant and

random distribution of SSRs in plant genomes by amplifying DNA sequences between closely linked SSRs. ISSR technique has been widely used in studies of cultivar identification, genetic mapping, genetic diversity, evolution and molecular ecology (Yanget *et al.*, 1996). ISSR markers provided sufficient polymorphism and reproducible fingerprinting profiles for evaluating genetic diversity in combination with agronomic and morphological traits (Najaphy *et al.*, 2012). Among eleven wheat cultivars, (El-Assal and Gaber, 2012) investigated the discriminating capacity of RAPD, ISSR and SSR markers and their effectiveness in establishing genetic relationship and diversity and landraces collected from Egypt and Saudi Arabia, and the dendrogram cluster diagram classified the evaluated genotypes in three major clusters corresponding to the cultivation regions. ISSR markers could be efficiently used to evaluate genetic variation in the wheat germplasm, genetic similarity and dissimilarity among genotypes are useful for genetic differentiation of wheat accessions, selection strategies and genetic development of crop plants (Sofalian *et al.*, 2008 & 2009). ISSRs markers used for genetic diversity analyses of some wheat varieties and no statistically significant differences were found between genetic diversity parameters of durum and bread wheat, most cultivars belonging to the same botanical variety were clustered in the same main group, however intra-variety ISSR polymorphism was also observed. (Carvalho *et al.*, 2008a, 2008b and 2009). The

cluster analysis tree using ISSR markers placed tested genotypes in groups and is in agreement with their known origin and the genetic relationships estimated by these polymorphism revealed greater level of genetic variability in Indian bread wheat varieties of wide adaptability and applicability (Chowdhury *et al.*, 2008). The efficiency of ISSR markers is very high and two primers were sufficient to distinguish some examined durum wheat cultivars (Pasqualone *et al.*, 2000). The genetic relationships of wheat accessions estimated by the polymorphism of ISSR markers were identical with those inferred by RFLP and RAPD markers, indicating the reliability of ISSR markers for estimation of genotypes (Nagaoka and Ogiwara, 1997). ISSR markers succeeded in distinguishing most of 20 hexaploid, tetraploid and diploid genotypes of wheat (Abou-Deif *et al.*, 2013).

Wheat genetics is more complicated than that of most other domesticated species. Some wheat species are diploid, with two sets of chromosomes, but many are stable polyploids, with four sets of chromosomes; tetraploid or six sets of chromosomes; hexaploid (Hoisington *et al.*, 1999).

Morphological characterization and evaluation of the diversity of wheat resources and landraces has been extensively studied around the world (Buerkert *et al.*, 2006, Dotlacil *et al.*, 2002 and Al-Maskri *et al.*, 2003). Anatomical parameters may play an important role in plant taxonomy (Metcalf and Chalk, 1957). Anatomical characters have proved to be more useful for delimitation of higher taxonomic ranks, such as genera and families. There are a large number of examples where anatomical parameters have contributed to solving significant taxonomic problems within different taxonomic groups (Carlquist, 1996; Carlsward *et al.*, 1997; Colombo and Spadaro, 2003; Scatena *et al.*, 2005; Satil and Selvi, 2007; Matias *et al.*, 2007; Schweingruber, 2007; Erxu *et al.*, 2009; De la Estrella *et al.*, 2009 and Zarrei *et al.*, 2010). Stem mechanical strength is an important characteristic of cereal breeding. The flattening of cereal crops, known as lodging, can cause large reductions in grain yield and quality (Berry *et al.*, 1998). The principal method to minimize growers lodging is through the use of high mechanical strength cultivars. Therefore, high mechanical stem strength is an object in wheat breeding. There are many reports concerning stem mechanical properties related to lodging resistance. Most of the studies have mainly focused on morphological and structural features of stem (Wang and Hu, 1991; Tripathi *et al.*, 2003; Wang and Li, 1997 & 1998 and Crook and Ennos 1995), physiological and developmental mechanisms of stem strength (Tripathi *et al.*, 2003), and measurement technology (Berry *et al.*, 2003 and Kashiwagi and

Ishimaru, 2004). However, little information on the relationship of cell wall components and mechanical properties of stems is available (Li *et al.*, 2003). The importance of grain morphology for classification has long been recognized (Heywood, 1969 and Barthlott, 1984). Echlin, (1968) firstly used Scanning Electron Microscopy (SEM) photographs of grains of *Arenaria*, revealing the grain micro sculpturing without taxonomic comments. Since then, SEM pictures were used in systematic studies on different genera such as *Sagina* (Crow, 1979), *Arenaria* (Wofford, 1981 and Wyatt, 1984), *Silene* (Melzheimer, 1977; Greuter, 1995; Oxelman, 1995 and Hong *et al.*, 1999). To meet the demand for high yielding and stress-resistant wheat cultivars, it is desirable to increase the genetic base of this crop. Synthetic hexaploid wheats are of interest to wheat breeding programs, especially for introducing new genes that confer resistance to biotic and abiotic stresses (Lage *et al.*, 2003). Traditionally, germplasm has been characterized based on agronomic and morphological studies, but recently the use of molecular markers to study diversity within domesticated species has become common.

## Materials And Methods

Grains of eight durum wheat (*Triticum durum* L.) cultivars; (Giza 203, Giza 409, Giza 413, Giza 823, Beniswif 1, Beniswif2, Sohag 1 and Sohag2) were obtained from the Agricultural Research Center (ARC), Giza, Egypt.

### 1. Molecular identification

#### 1.1. Genomic DNA extractions

DNeasy™ Plant Mini Kit (Qiagen Inc., cat. no. 69104) was used for DNA isolation from the leaves of the eight wheat cultivars.

#### 1.2. Randomly amplified polymorphic DNA analysis (RAPD)

RAPD reactions were conducted according to the method of Michmore *et al.* (1991) using ten random 10-mer primers from Operon Technology (USA). Their codes, sequences and GC % are shown in Table (1).

The amplification was carried for 42 cycles as follows: 94°C/ 4 min. (one cycle); 94°C/ 1 min., 36°C/ 1 min., 72°C/ 2 min. (40 cycles); 72°C/ 10 min. (one cycle) and 4°C (infinite). PCR products were migrated on agarose (1.2%) according to Sambrook *et al.*, (1989).

#### 1.3. Inter-simple sequence repeats (ISSRs) amplification analysis

An alternative method to SSRs, called inter-SSR (ISSR), was used according to Zietkiewicz *et al.* (1994) using seven primers. Table (2) shows the codes of these primers, their sequences and GC%.

The thermal cycler was programmed for three main steps as follows: 94 °C /4 min. (one cycle), 94 °C/1 min. (40 cycles), 55 °C/1 min. (40 cycles), 72 °C/2 min. (40 cycle), 72 °C /10 min. (one cycle) and 4°C (infinite). PCR products were migrated on agarose (1.2%) according to Sambrook *et al.*, (1989).

## 2. Grains micro morphology and stem & leaf anatomical analyses

### 2.1. Grains micro morphology

Grains surface detailed scan attributes features were examined by Scanning Electronic Microscope (SEM) on copper stubs and coated with thin layer of gold in polar on E5000 sputter coater then examined by Joel-SMT330 SEM, the magnification power was the same for all groups of photograph.

### 2.2. Anatomical analysis of stem and leaf

The segments of the organs from the middle part of fresh plants were separated fixed and preserved in F.A.A (formalin, acetic acid, and ethanol). Stem and leaves sectioned at 10-20µm. Safranin, 2% and light green, 1% were used for double staining. Stem and leaves section examined under a light microscope (Olympus, BH2 REC, Tokyo, Japan) equipped with a digital camera (JVC, TK1280E, Japan) and an image analyzing system (Leica, Qwin, Cambridge, UK).

## Results

### 1. Molecular identification of durum wheat cultivars

#### 1.1. Randomly amplified polymorphic DNA (RAPD) analysis

PCR-based methods using arbitrary primers have been widely used as fingerprinting techniques. Among these techniques, RAPD is a reliable and very useful method for cultivar identification and genomic analysis. In this study, ten arbitrary 10-mer oligonucleotide primers were used to amplify the genomic DNA from the eight durum wheat cultivars.

Amplification of RAPD primers showed different numbers of fragments ranged from six fragments (primers; OP- A10 and OP- C11), seven fragments (primer; OP- C18), nine fragments (primers; OP-A07, OP- A09, and OP- D02), eleven fragments (primers; OP- B07 and OP- B12), twelve fragments (primer; OP- F08) and thirteen fragments (primer OP- F04). All these data are shown in Figures (1).

Percentage of polymorphism ranged from 0% (primer; OP- A10), 36.4% (primer; OP- B07), 44.4% (primer; OP- A09), 50% (primer; OP- F08), 66.7% (primer; OP- D02), 69.2% (primer; OP- F04), 77.8% (primer; OP- A07), 81.8% (primer; OP- B12) and 100% (primers; OP- C11 and OP- C18).

The results of the amplified fragments using RAPD method with ten arbitrary 10-mer primers for the eight durum wheat cultivars are presented in Table

(3). The number of total amplified fragments (TFA), polymorphic fragments (PF) for each primer, amplified fragments (AF) and specific marker (SM) for each genotype are shown in Table (3).

#### 1.2. Genetic similarity and cluster analysis based on RAPD markers

The results of cluster analysis (Similarity index) based on RAPD analysis using UPGMA computer analyses are shown in Table (4). The highest similarity value recorded was 91% which was observed between Beniswif 2 and Sohag 1, while the lowest similarity value (69%) was recorded between Giza 203 and Sohag2. A dendrogram for the genetic relationships via RAPD analysis among the eight durum wheat cultivars results were carried out and are shown in Figure (3). The eight durum wheat cultivars were separated into two clusters; cluster 1 included Beniswif 2, Sohag 1, Beniswif 1 and Sohag 2 respectively, while cluster 2 comprised included Giza 413, Giza 824, Giza 409 and Giza 203 respectively.

#### 1.3. ISSR amplification analysis

Inter-simple sequence repeats (ISSRs) amplification is a technique which could be effectively used to quickly differentiate closely related individuals (Zietkiewicz *et al.*, 1994). Seven ISSR primers were used in this study to characterize and identify the eight durum wheat cultivars (Figure 2).

Amplification of ISSR primers showed different numbers of fragments ranged from six fragments (primer; HB- 13), eight fragments (primers; HB- 10 and HB- 14), nine fragments (primers; HB- 11 and HB- 12) ten fragments (primer; HB- 15) and twelve fragments (primer; HB- 09).

The results of the amplified fragments using ISSR method with seven primers for the eight durum wheat cultivars are presented in Table (5). The number of total amplified fragments (TFA), polymorphic fragments (PF) for each primer, amplified fragments (AF) and specific marker (SM) for each genotype are shown in Table (5).

#### 1.4. Genetic similarity and cluster analysis based on ISSRs markers

The results of the amplified fragments using ISSR method for eight durum wheat cultivars showed some specific markers. The results of cluster analysis (Similarity index) based on ISSR analysis using UPGMA computer analyses are shown in Table (6). The highest similarity value recorded was 92% which was observed between Sohag 1 and Sohag 2, while the lowest similarity value (68%) was recorded between Giza 409 and Sohag 2 & between Giza 203 and Sohag 1. A dendrogram for the genetic relationships via ISSR analysis among the eight durum wheat cultivars results were carried out and are shown in Figure (4). The eight durum wheat cultivars were separated into two clusters; cluster 1 included Sohag 1, Sohag 2,

Beniswif 2 and Beniswif 1 respectively, while cluster 2 comprised included Giza 824, Giza 409, Giza 413, and Giza 203 respectively.

## 2. Grains micro morphology, stem and leaf anatomical study

### 2.1. Grains micromorphology

The grains coat micro morphology is reticulate in all taxa, but there are variation with regard to the alignment and shape of network and architecture of interspaces enclosed by raised line (Figure5). The reticulate shape has a longitudinal projection along the grain coat surface. There are some variations in reticulate surface patterns. It may be strongly reticulate with the anticlinal walls raised highly above the level of the periclinal wall as for instance in cultivars; Giza 203, 409, 823 and Beniswif 1,2 or it may be weakly reticulate with the anticlinal walls raised only slightly above the level of the periclinal wall as in cultivars; Giza 413 and Sohag 1,2. The facets may also have various types of secondary ornamentations in the form of small, wart-like protuberances (Giza 203). The reticulum were compact with thick wall in cultivars; Giza 409, Beniswif 2 and Sohag 1 or with thin wall in cultivars; Giza 203 and Beniswif 1 and Sohag 2.

### 2.2. Stem anatomy

Stem is an important organ consisting of storage, transportation and mechanical tissues and is closely related to yield. There is an irregular cavity in the stems. Stem is circular to oval in cross-section, with flat or ribbed margin (Figure 6). Cuticles are thick, except cultivar; Beniswif 1 was thin. In cultivars; Giza 413 and Sohag 1, cuticles are much thick. Results appeared that epidermis is composed of small cells with thickened cell walls in all cultivars except Giza 203 and Beniswif 1, which had thin wall epidermis. In

cortex; parenchyma or collenchymas cells are arranged in six to ten rows, the area of cortex ranged from 0.9 to 3.5ml. Cortex is composed of parenchyma in four cultivars; Giza 203, 409 and Beniswif 1, 2 but it is composed of collenchymas in the other four cultivars; Giza 413, 823, and Sohag 1, 2. Collateral vascular bundles surrounded by fiber are arranged into two rows; Giza 409, 413, Beniswif 2 and Sohag 2 or three rows; Giza 203, 823, Beniswif 1 and Sohag 1. The number of bundles ranged from 54 to 78 bundles and central stem portion has large, thin-walled parenchyma cells. Table (7) summarizes all data of stem anatomy of eight durum wheat cultivars.

### 2.3. Leaf anatomy

Figure (7) shows leaf anatomy which revealed that upper and lower cuticle is thick in both cultivars; Giza 203 and Giza 409 but very thick in other studied cultivars except both cultivars; Beniswif 2 and Sohag 1. In these two cultivars, the upper cuticle was thin and the lower was very thick. The epidermis composed of one layer of cells with thick wall in all cultivars except Giza 203, and Beniswif 1, which they had a thin cell wall. Palisade tissue is composed of two layers of cylindrical cells, while spongy tissue has two to three layers of cells, irregular in shape. Spongy tissue has two layers in cultivars; Giza 409, Giza 413, Beniswif 2, and Sohag 2, the sponge tissue of the rest cultivars have three layers. Collateral vascular bundles are arranged in a single row and surrounded by parenchymatous sheath cells. Larger vascular bundles have groups of sclerenchyma tissue on adaxial and abaxial sides. In parenchyma sheath cells, especially in sclerenchyma groups on abaxial side solitary. Table (8) summarizes all data of leaf anatomy of eight durum wheat cultivars.

**Table (1): Primer names, their sequences and GC% used for RAPD analysis.**

No.	Primer name	Sequences (5'→3')	GC %	No.	Primer name	Sequences (5'→3')	GC %
1	OP-A07	GTAACCAGCC	60%	6	OP-C11	AAAGCTGCGG	60%
2	OP-A09	GGGTAACGCC	70%	7	OP-C18	TGAGTGGGTG	60%
3	OP-A10	GTGATCGCAG	60%	8	OP-D02	GGACCCAACC	70%
4	OP-B07	GGTGACGCAG	70%	9	OP-F04	GGTGATCAGG	70%
5	OP-B12	CCTTGACGCA	60%	10	OP-F08	GGGATATCGG	60%

**Table (2): Codes, sequences and GC% for the seven primers used in ISSRs analysis.**

No.	Primer	Sequences (5'→3')	GC %
1	HB-09	GTG TGT GTG TGT GC	57%
2	HB10	GAGAGAGAGACC	57%
3	HB11	GTGTGTGTGTGTC	57%
4	HB12	CAC CACCAC GC	73%
5	HB13	GAG GAGGAG GC	73%
6	HB14	CTCCTCCTCGC	73%
7	HB15	GTGGTGGTGGC	73%

**Table (3): Number of amplified fragments and specific markers of the 8 durum wheat cultivars based on RAPD analysis.**

Primers			Giza 203		Giza 409		Giza 413		Giza 823		Beniswif 1		Beniswif 2		Sohag 1		Sohag 2		TSM
	TAF	PF	AF	SM	AF	SM	AF	SM	AF	SM	AF	SM	AF	SM	AF	SM	AF	SM	
OP-A07	9	7	6	1 (-)	7	-	7	-	6	-	7	-	5	-	7	1(+)	4	-	3
OP-A09	9	4	6	1 (-)	9	1(+)	8	-	8	-	8	-	7	1 (-)	8	-	7	1 (-)	3
OP-A10	6	0	6	-	6	-	6	-	6	-	6	-	6	-	6	-	6	-	0
OP-B07	11	4	10	-	8	-	8	-	9	-	10	-	10	-	11	-	6	-	3
OP-B12	11	9	3	-	7	-	4	-	9	2(+)	2	-	5	-	9	-	5	-	2
OP-C11	6	6	3	-	3	-	4	-	4	-	3	-	2	1 (-)	3	-	2	-	1
OP-C18	7	7	4	1(+)	3	1(+)	5	-	3	-	4	-	3	1 (-)	5	-	4	-	4
OP-D02	9	6	5	-	8	-	9	1(+)	7	-	6	-	5	-	6	-	4	-	1
OP-F04	13	9	6	-	7	-	8	-	10	-	10	1(+)	9	-	10	-	10	-	1
OP-F08	12	6	8	-	9	1 (+)	8	-	6	1 (-)	11	-	11	-	11	-	8	-	2
Total	93	58	57	3	67	4	67	1	68	3	67	1	63	3	76	1	56	1	20

TAF= Total amplified fragments. PF= Polymorphic fragment for each primer. AF= Amplified fragments.

SM= Specific markers including either the presence or absence of a fragment.

TSM= Total number of specific markers.

**Table (4): Similarity matrix among the 8 durum wheat cultivars based on RAPD analysis.**

	Giza 203	Giza 409	Giza 413	Giza 823	Beniswif 1	Beniswif 2	Sohag 1
Giza 409	0.790						
Giza 413	0.780	0.857					
Giza 823	0.720	0.844	0.866				
Beniswif 1	0.790	0.791	0.842	0.815			
Beniswif 2	0.750	0.754	0.791	0.794	0.846		
Sohag 1	0.752	0.797	0.831	0.847	0.867	0.906	
Sohag 2	0.690	0.715	0.770	0.832	0.797	0.824	0.833

**Table (5): Number of amplified fragments and specific markers of the 8 durum wheat cultivars based on ISSR analysis.**

Primers			Giza 203		Giza 409		Giza 413		Giza 823		Beniswif 1		Beniswif 2		Sohag 1		Sohag 2		TSM
	TAF	PF	AF	SM	AF	SM	AF	SM	AF	SM	AF	SM	AF	SM	AF	SM	AF	SM	
HB-09	12	6	8	-	8	-	10	-	11	-	10	-	10	-	10	-	11	-	-
HB-10	8	6	4	1 (-)	5	-	5	-	5	-	7	-	6	-	6	-	7	-	1
HB-11	9	6	6	-	9	-	9	-	7	-	5	-	6	-	8	-	3	1 (-)	1
HB-12	9	3	9	-	8	-	9	-	8	-	9	-	7	-	7	1 (-)	8	-	1
HB-13	6	3	3	-	3	-	5	-	5	1(+)	4	-	4	-	5	-	5	-	1
HB-14	8	7	3	-	6	1 (-)	7	1(+)	5	-	4	-	6	1 (-)	4	-	4	-	2
HB-15	10	8	6	1(+)	5	1(+)	3	1 (-)	5	-	6	1 (-)	9	-	9	-	9	-	2
Total	62	39	39	2	44	2	48	2	46	1	45	1	48	1	49	1	47	1	8

TAF= Total amplified fragments. PF= Polymorphic fragment for each primer. AF= Amplified fragments.

SM= Specific markers including either the presence or absence of a fragment.

TSM= Total number of specific markers.



**Table (6): Similarity matrix among the 8 durum wheat cultivars based on ISSR analysis.**

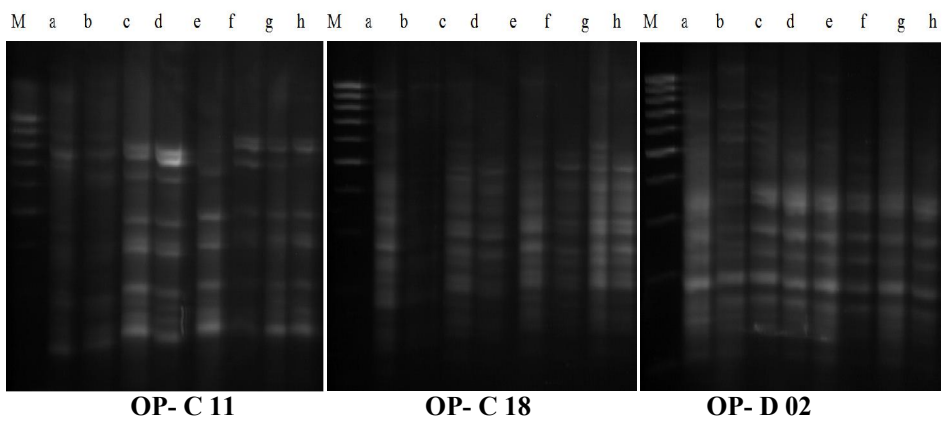
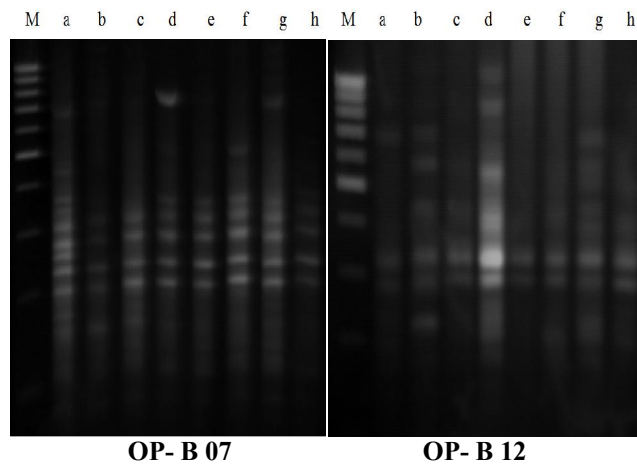
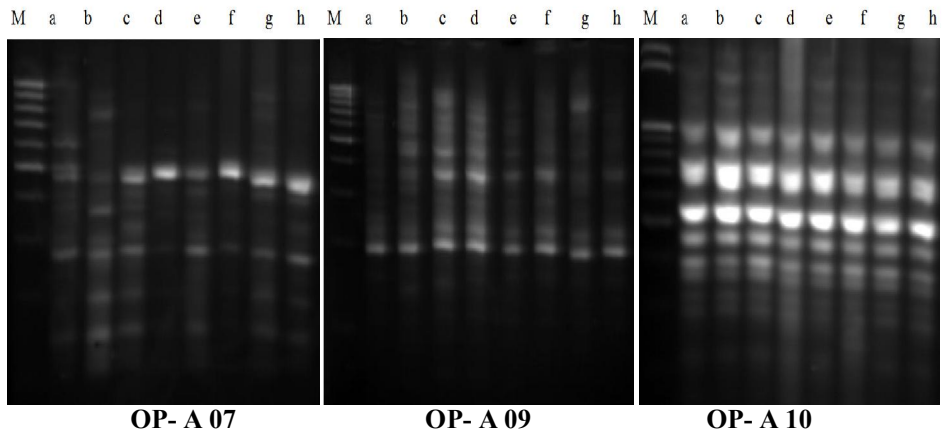
	Giza 203	Giza 409	Giza 413	Giza 823	Beniswif 1	Beniswif 2	Sohag 1
Giza 409	0.867						
Giza 413	0.805	0.870					
Giza 823	0.824	0.822	0.830				
Beniswif 1	0.810	0.742	0.774	0.813			
Beniswif 2	0.736	0.739	0.771	0.851	0.860		
Sohag 1	0.682	0.710	0.784	0.821	0.830	0.907	
Sohag 2	0.721	0.681	0.737	0.839	0.891	0.905	0.917

**Table (7): Stem anatomical structure of eight durum wheat cultivars.**

Characters Cultivars	Cuticle		Epidermis		Cortex		Vascular bundles	
	Size (mm)	Structure	Size (mm)	Structure	Size (mm)	Structure	Number	Structure
Giza 203	0.1	Thick	0.1-0.3	Thin	0.9-2.0	Parenchyma	72	3 rows
Giza 409	0.15	Thick	0.2-0.4	Thick	2.0-3.5	Parenchyma	54	2 rows
Giza 413	0.1	Very thick	0.15-0.4	Thick	1.3-2.3	Chollenchyma	62	2 rows
Giza 823	0.15	Thick	0.15-0.5	Thick	1.5-2.5	Chollenchyma	56	3 rows
Beniswif 1	0.1	Thin	1.5-0.3	Thin	1.3-2.3	Parenchyma	62	3 rows
Beniswif 2	0.1	Thick	0.1-0.3	Thick	1.2-1.6	Parenchyma	58	2 rows
Sohag 1	0.1	Thick	0.15-0.5	Thick	1.7-3.0	Chollenchyma	78	3 rows
Sohag 2	0.15	Very thick	0.15-0.3	Thick	1.4-4.0	Chollenchyma	73	2 rows

**Table (8): Leaf anatomical structure of eight durum wheat cultivars.**

Characters Cultivars	Cuticle		Epidermis		Palisade tissue		Sponge tissue	
	Size (mm)	Structure	Size (mm)	Structure	Size (mm)	Structure	Size (mm)	Structure
Giza 203	0.05-0.1	Thick	0.4-1.5	Thin	1.3-2	2 row	1.5-2	3 rows
Giza 409	0.05-0.1	Thick	0.2-0.4	Thick	1.5-2.5	2 row	2-3	2 rows
Giza 413	0.05-0.15	Very thick	0.3-1.5	Thick	1-2	2 row	2-3	2 rows
Giza 823	0.05-0.15	Very thick	0.2-1.1	Thick	1.5-2.3	2 row	2-2.5	3 rows
Beniswif 1	0.05-0.15	Very thick	0.3-0.5	Thin	1-2.5	2 row	3-4.5	3 rows
Beniswif 2	0.05-0.15	Upper thin, lower very thick	0.2-0.5	Thick	1-1.5	2 row	1-1.5	2 rows
Sohag 1	0.05-0.15	Upper thin, lower very thick	0.5-1.5	Thick	1.5-2.5	2 row	2-2.5	3 rows
Sohag 2	0.05-0.15	Very thick	0.2-1.1	Thick	2-2.5	2 row	2-2.5	2 rows



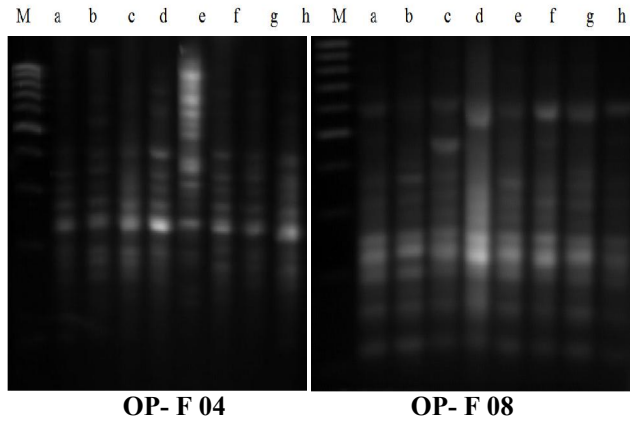
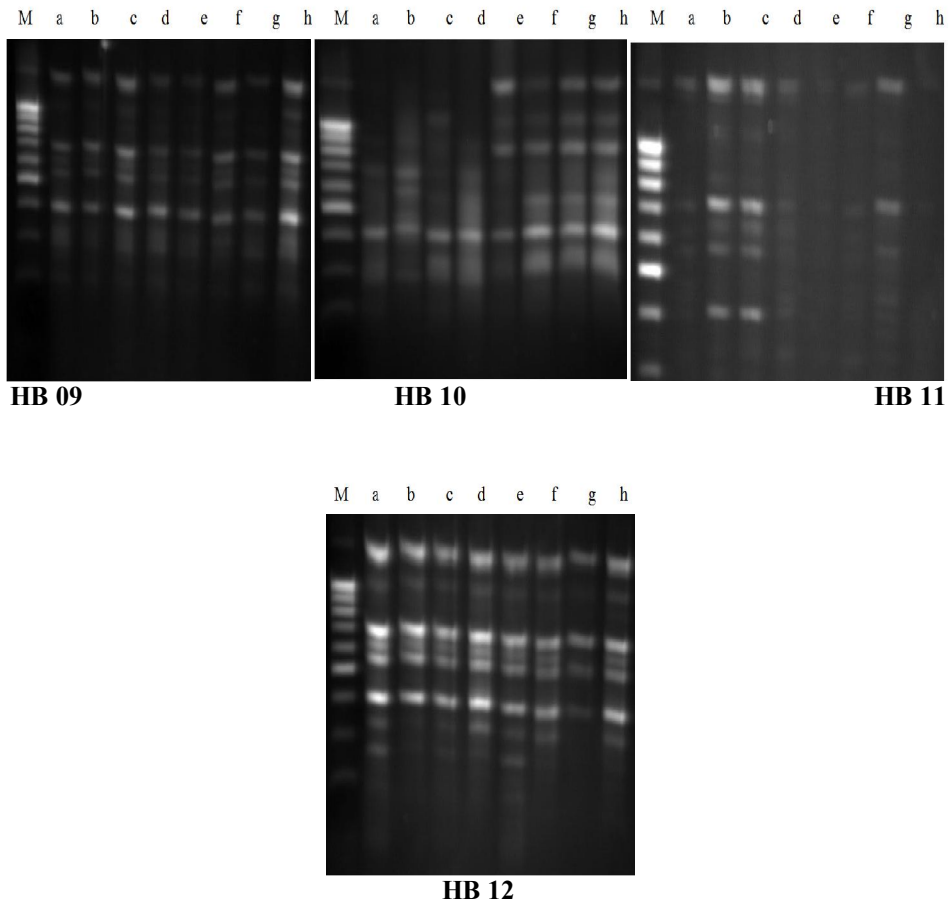


Figure (1): DNA polymorphism using 10 primers for RAPD - PCR technique with the 8 durum wheat cultivars. Lanes a to h represent cultivars; a; Giza203, b; Giza409, c; Giza413, d; Giza823, e; Beniswif1, f; Beniswif2, g; Sohag1, h; Sohag2 and M = 100 bp DNA ladder.





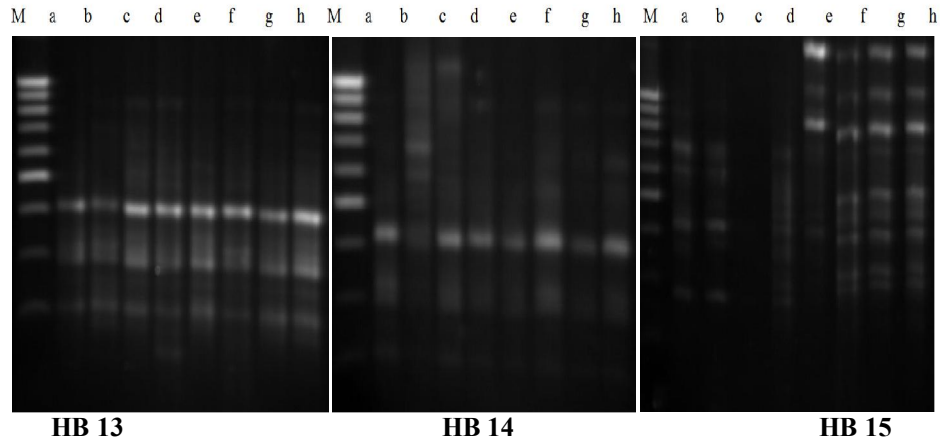


Figure (2): DNA polymorphism using 7primers for ISSR technique with the 8 durum wheat cultivars. Lanes a to h represent cultivars; a; Giza 203, b; Giza 409, c; Giza 413, d; Giza 823, e; Beniswif 1, f; Beniswif 2, g; Sohag 1, h; Sohag2 and M = 100 bp DNA ladder.

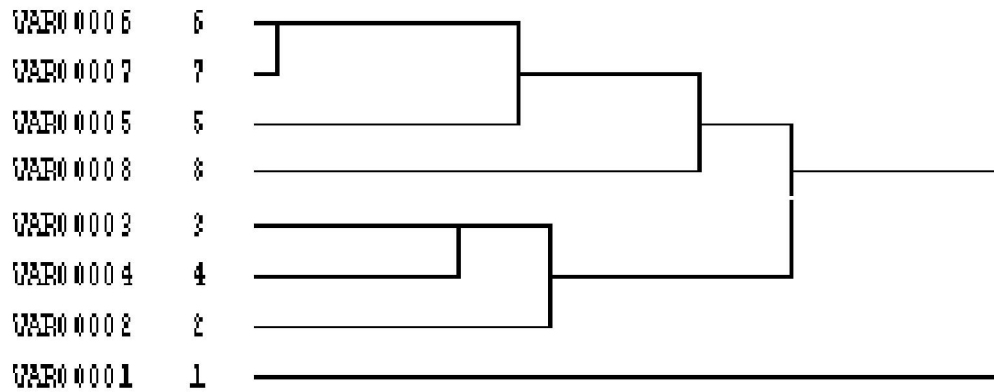


Figure (3): Dendrogram for the genetic distances among the eight durum wheat cultivars based on similarity index data of RAPD analysis. 1= Giza 203, 2= Giza 409, 3= Giza 413, 4= Giza 823, 5= Beniswif 1, 6= Beniswif 2, 7= Sohag 1 and 8 = Sohag2.

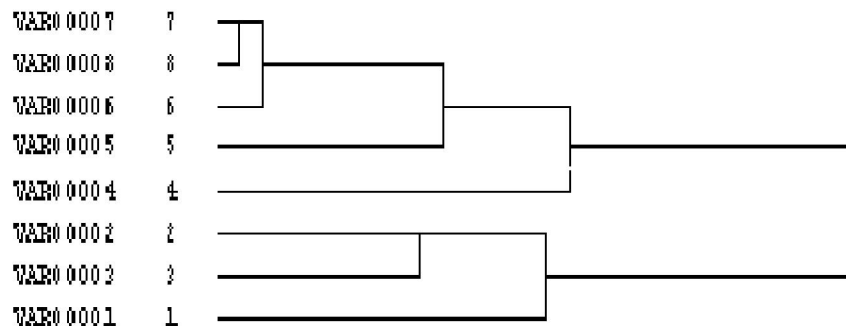


Figure (4): Dendrogram for the genetic distances among the eight durum wheat cultivars based on similarity index data of ISSR analysis. 1= Giza 203, 2= Giza 409, 3= Giza 413, 4= Giza 823, 5= Beniswif 1, 6= Beniswif 2, 7= Sohag 1 and 8 =Sohag2.

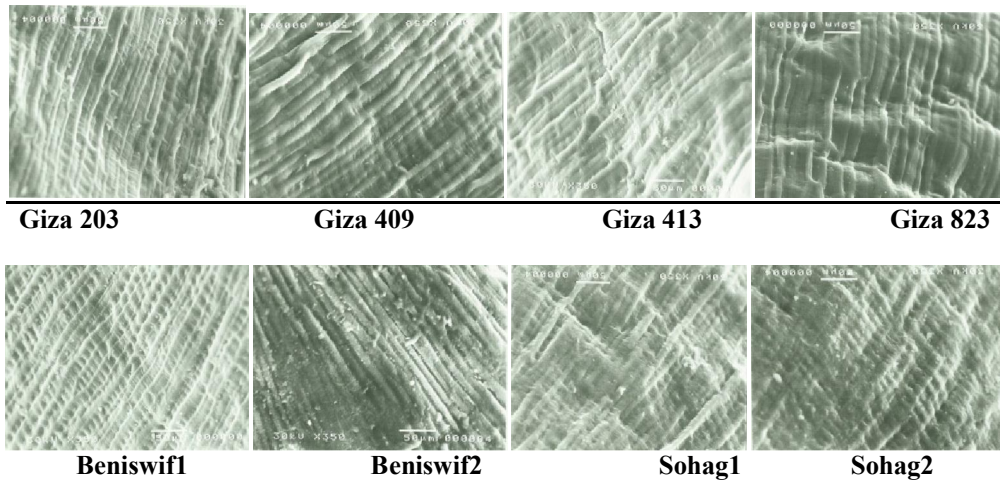


Figure (5): SEM of grains surface micro morphology of eight durum wheat cultivars.

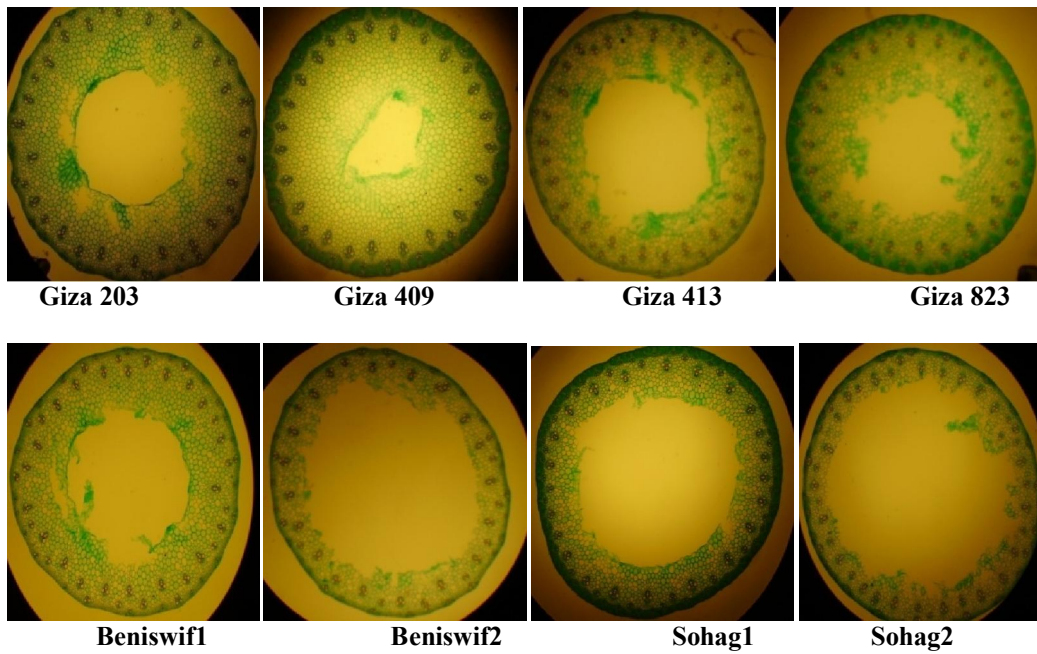


Figure (6): Light micrographs of stem cross section of eight durum wheat cultivars.

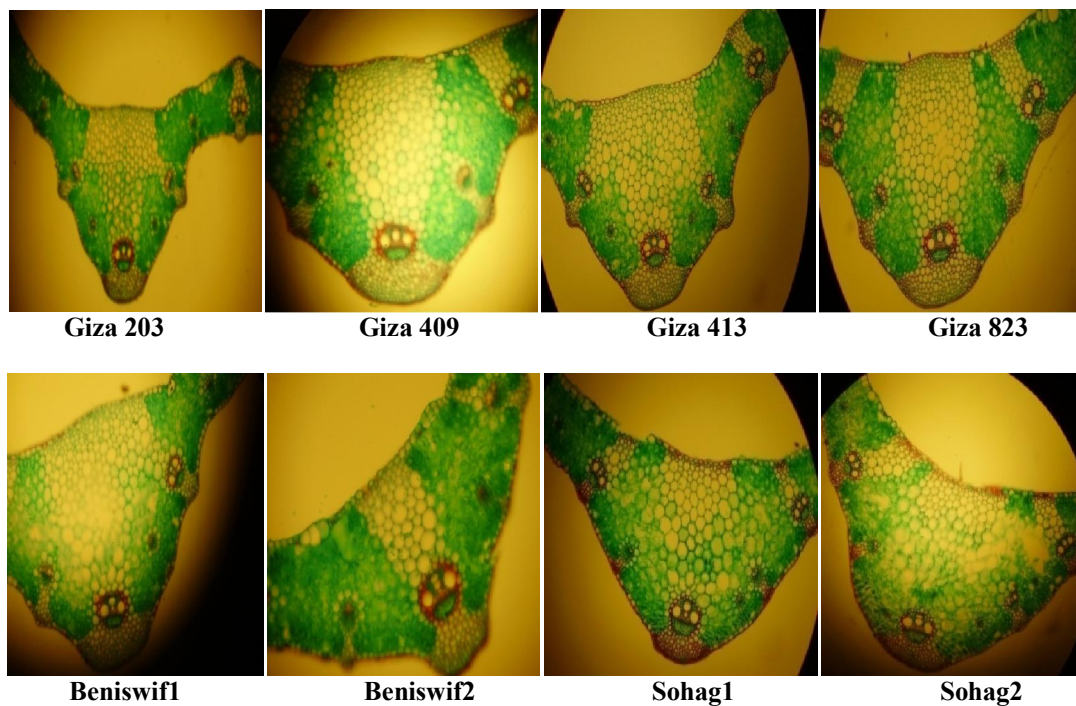


Figure (7): Light micrographs of leaf anatomy of eight durum wheat cultivars.

### Discussion

The introduction of molecular markers in plant breeding has presented a valuable tool for the characterization of genetic materials (Aliyev *et al.*, 2007). The genetic similarity values calculated from RAPD markers were very similar to those calculated with RFLP markers for intraspecific comparisons of 49 diploid wheat accessions (Castagna *et al.*, 1997). Knowledge of genetic diversity within as well as genetic relatedness among populations from different geographic areas is expected to have a significant impact on the conservation and utilization programs of emmer germplasm (Teklu *et al.*, 2007). Our data is in agreement with (Karaca and Izbirak, 2008) whose used 42 RAPD and 18 ISSR primers to characterize the genetic relationship among 25 durum wheat cultivars. Guasmi *et al.*, (2012), reported that RAPD and ISSR techniques are very useful to assay the genetic diversity among 80 barley specimens and the percentage of polymorphism was 66.67%. In our data, similarity of ISSR ranged between 68% and 91% while it was 77% (Zamanianfard *et al.*, 2015) among 25 durum genotypes examined, 84.4% (Abou-Deifet *et al.*, 2013) among 20 wheat cultivars and 83% (Shirnasabian *et al.*, 2014) via 18 durum wheat cultivars. The use of the Scanning Electron Microscopy (SEM) in the study of seeds has revealed a great variation in seed coat micro morphology and allowed the description of number morphological features. For these, comparison with seeds of closely

related. The use of microscopic methods and anatomical characteristics can supply useful information to differentiate between cultivars. The importance of seed morphology for classification has long been recognized (Heywood, 1969 and Barthlott, 1984). Few SEM studies have been concerned with the fine structural differences in taxonomic and morphological features of closely related species, especially within groups of plants of the same species (Liu *et al.*, 2005; Joshi *et al.*, 2008). Also Minuto *et al.*, (2006) used seed micro morphological characters to compare between taxa within the Caryophyllaceae. Characters of the leaf, such as the epidermis, stomata and indumentums characters, have proved to be much more reliable for taxonomic considerations in many genera (Dickison, 2000; Yang and Lin, 2005 and Strgulc-Krajsek *et al.*, 2006). The layers of each cross section of leaf mesophyll differed according to the taxa (Gowayed, 2003).

### Conclusion

Detection of genetic relationship is very useful for breeders to know the best relation between cultivars for breeding programs to obtain the best hybrid with improved characters specially yield to cover increased consumption all over the world. Phylogenetic relationship detected the percentage of similarity between cultivars and these molecular results supported by morphological and anatomical

results. Data from phylogeny suggests the possible hybridizations may be done between different Egyptian durum cultivars.

### References

1. Abou-Deif MH, Rashed MA, Sallam MAA, Mostafa EAH, Ramadan WA. Characterization of twenty wheat varieties by ISSR markers. *Middle-East J. of Scientific Research*, 2013; 15: 168-175.
2. Al-Maskri A, Nagieb M, Hammer K, Filatenko AA, Khan I, Buerkert A. A note about *Triticum* in Oman. *Genet. Resour. Crop Evol.*, 2003; 50: 83-87.
3. Aliyev RT, Abbasov MA, Mammadov AC. Genetic identification of diploid and tetraploid wheat species with RAPD markers. *Turk. J. Biol.*, 2007; 31: 173-180.
4. Barthlott W. Micro structural features of seed surface. In: Heywood V. H., Moore D. M. (eds.) *Current concepts in plant taxonomy*. Academic Press, London, 1984; pp. 95-105.
5. Boggini G, Palumbo M, Galcagno F. Characterization and utilization of sicilian landraces of durum wheat in breeding programmes. *Wheat Genetic Resources*, 1990; 223-234.
6. Berry PM, Spink JH, Griffin JM. Research to understand, predict and control factors affecting lodging in wheat. Home-Grown Cereals Authority Research Project No. 169. HGCA, London. 1998.
7. Berry PM, Spink J, Sterling M. Methods for rapidly measuring the lodging resistance of wheat cultivars. *J. Agron. Crop Sci.*, 2003; 189: 390-401.
8. Bretting PK, Widrechner MP. Genetic markers and plant genetic resources. *Plant Breed. Rev.*, 1995; 13: 11-86.
9. Buerkert, A, Oryakhail M, Filatenko AA Hammer K. Cultivation and taxonomic classification of wheat landraces in the upper Panjsher Valley of Afghanistan after 23 years of war. *Genet. Resour. Crop Evol.*, 2006; 53: 91-97.
10. Carlquist S. Wood, bark and stem anatomy of Gnetales: a summary. *Int. J. Plant Sci.*, 1996; 157: S58-S76.
11. Carlsward BS, Stern WL, Judd WS, Lucansky TW. Comparative leaf anatomy and systematics in *Dendrobium*, sections *Aporum* and *Rhizobium* (Orchidaceae). *Int. J. Plant Sci.*, 1997; 158: 332-342.
12. Castagna R, Gnocchi S, Perenzin M, Heun M. Genetic variability of the wild diploid wheat *Triticum urartu* revealed by RFLP and RAPD markers. *Theor. Appl. Genetics*, 1997; 94: 424-430.
13. Carvalho A, Brito JL, Macas B, Pinto HG. Genetic variability analysis of a collection of old Portuguese bread wheat using ISSRs. *Options Mediterraneennes. Ser. A. Sem. Medit.*, 2008a; 81:35-38.
14. Carvalho A, Brito JL, Macas B, Pinto HG. Molecular characterization of a Portuguese collection of durum wheat. *Options, Mediterraneennes. Ser. A, Sem. Medit.*, 2008b; 81: 59-61.
15. Carvalho, A, Brito JL, Macas B., Pinto HG. Genetic diversity and variation among botanical varieties of old Portuguese wheat cultivars revealed by ISSR assays. *Biochem. Genet.*, 2009; 47: 276-294.
16. Chowdhury RMVK, Kundu SJS, Jain RK. Applicability of ISSR markers for genetic diversity evaluation in Indian bread wheat genotypes of known origin. *Environ. Ecol.*, 2008; 26: 126-131.
17. Chowdhury MA, Slinkard AE. Genetic diversity in grasspea (*Lathyrussativus* L.). *Genet. Resour. Crop Evol.*, 2000; 47: 163-169.
18. Cimmyt. Wheat in developing world. <http://www.cimmyt.org>. 2003.
19. Colombo P, Spadaro V. Anatomical studies on the *Sicilian helianthemum* (Cistaceae). *Flora Medit.*, 2003; 13: 205-218.
20. Crook MJ, Ennos AR. The effect of nitrogen and growth regulators on stem and root characteristics associated with lodging in two cultivars of winter wheat. *J. Exper. Bot.*, 1995; 46: 931-938.
21. Crow GE. The systematic significance of seed morphology in *Sagina* (Caryophyllaceae) under scanning electron microscopy. *Brittonia*, 1979; 31: 52-63.
22. De la Estrella M, Aedo C, Velayos M. A morphometric analysis of *Daniellia* (Fabaceae-Caesalpinioideae). *Bot. J. Linn Soc.*, 2009; 159: 268-279.
23. Dickison WC. Integrative plant anatomy. *Academic Press, San Diego*. 2000.
24. Dotlacil L, Gregova E, Hermuth J, Stehno Z, Kraic J. Diversity of HMW-Glu alleles and evaluation of their effects on some characters in winter wheat landraces and old cultivars. *Czech J. Genet. Plant Breed.*, 2002; 38: 109-116.
25. Echlin P. The use of scanning reflection electron microscope in the study of plant and microbial material. *J. Roy. Microscop. Soc. London*, 1968; 88: 407-418.
26. El-Assal SED, Gaber A. Discrimination capacity of RAPD, ISSR and SSR markers and their



- effectiveness in establishing genetic relationship and diversity among Egyptian and Saudi wheat cultivars. *Am. J. Appl. Sci.*, 2012; 9: 724-735.
27. Erxu P, Qiufa P, Hongfei L, Jingbo S, Yueqiang D, Feilai H, Hui H. Leaf morphology and anatomy of *Camellia* section *Camellia* (Theaceae). *Bot. J. Linn Soc.*, 2009; 159: 456-476.
  28. FAO, FAO Statistical Databases. <http://apps.fao.org/>, 2003.
  29. Gawayed SMH. Some botanical studies on *Triticum* genus. Thesis of M.Sc., Suez Canal Uni., Ismailia, Egypt, 2003.
  30. Greuter W. *Silene* (Caryophyllaceae) in Greece: a sub generic and sectional classification. *Taxon.*, 1995; 44: 543-581.
  31. Guasmi F, Elfalleh W, Hannachi H, Feres K, Touil L, Marzougui N, Triki T, Ferchichi A. The Use of ISSR and RAPD markers for genetic diversity among south Tunisian barley. *ISRN Agronomy*, 2012; 2012: 1-9.
  32. Heywood VH. Scanning electron microscopy in the study of plant material. *Micron*, 1969; 1: 1-14.
  33. Hoisington D, Khairallah M, Reeves T, Ribaut JM, Skovmand B, Taba S, Warburton M. Plant genetic resources: What can they contribute toward increased crop productivity? *Proc. Natl. Acad. Sci., USA*, 1999; 96: 5937-5943.
  34. Hong SP, Han MJ, Kim KJ. Systematic significance of seed coat morphology in *Silene L. s. str.* (Sileneae-Caryophyllaceae) from Korea. *J. P. Biol.*, 1999, 42: 146-150.
  35. Joshi CP, Nguyen HT. Application of the random amplified polymorphic DNA technique for the detection of polymorphism among wild and cultivated tetraploid wheat. *Genome*, 1993; 36: 602-609.
  36. Joshi M, Sujatha K, Harza S. Effect of TDZ and 2,4-D on peanut somatic embryogenesis and *in vitro* bud development. *Plant Cell, Tissue and Organ Culture*, 2008; 94: 85-90.
  37. Karaca M, Izbirak A. Comparative analysis of genetic diversity in Turkish durum wheat cultivars using RAPD and ISSR markers. *J. Food Agric. Environ.*, 2008; 6: 219-225.
  38. Kashiwagi T, Ishimaru K. Identification and functional analysis of a locus for improvement of lodging resistance in rice. *Plant Physiol.*, 2004; 134: 676-683.
  39. Lage J, Warburton ML, Crossa J, Skovmand B, Andersen SB. Assessment of genetic diversity in synthetic hexaploid wheats and their *Triticum dicoccum* and *Aegilopstauschii* parents using AFLPs and agronomic traits. *Euphytica*, 2003, 134: 305-317.
  40. Li YH, Qian Q, Zhou YH. Brittle Culm1, which encodes a COBRA-like protein, affects the mechanical properties of rice plants. *Plant Cell*, 2003; 15: 20-25.
  41. Liu Q, Zhao NN, Hao G, Hu XY, Liu YX. Caryopses morphology of the Chloridoideae (Gramineae) and its systematic implications. *Botanical J. of Linnaean Society*, 2005; 148: 57-72.
  42. Matias LQ, Soares A, Scatena VL. Systematic consideration of petiole anatomy of species of *Echinodorus* Richard (Alismataceae) from north-eastern Brazil. *Flora*, 2007; 202: 395-402.
  43. Melzheimer V. Biosystematische revision einiger *Silene*-Arten (Caryophyllaceae) der Balkanhalbinsel (Griechenland). *Bot. Jahrb. Syst.*, 1977; 98: 1-92.
  44. Metcalfe CR, Chalk L. Anatomy of the dicotyledons. *vol I. Clarendon Press, Oxford*, 1957; pp: 502-535.
  45. Michelmore RW, Psaran I, Kesseli RV. Identification of markers linked to disease-resistance genes by bulked segregate analyses. A rapid method to detect markers in specific region by using segregating population. *Proc. Nat. Acad. Sci.*, 1991; 88: 9828-9832.
  46. Minuto L, Fior S, Roccotiello E, Casazza G. Seed morphology in *Moehringia L.* and its taxonomic significance in comparative studies within the Caryophyllaceae. *Pl. Syst. Evol.*, 2006; 262: 189-208.
  47. Nagaoka T, Ogihara Y. Applicability of inter-simple sequence repeat polymorphisms in wheat for use as DNA markers in comparison to RFLP and RAPD markers. *Theor. Appl. Genet.*, 1997; 94: 597-602.
  48. Najaphy A, Parchin RA, Farshadfar E. Comparison of phenotypic and molecular characterizations of some important wheat cultivars and advanced breeding lines. *Aust. J. Crop Sci.*, 2012; 6: 326-332.
  49. Oxelman B. A revision of the silenesedoides-group (Caryophyllaceae). *Willdenowia*, 1995; 25: 143-169.
  50. Pasqualone A, Lotti C, Bruno A, Vita P, Fonzo N, Blanco A. Use of ISSR markers for cultivar identification in durum wheat. *Options, Mediterraneennes. Ser. A., Sem. Medit.*, 2000; 40: 157-161.
  51. Sambrook J, Fritch EF, Maniatis T. Molecular cloning a laboratory manual. Cold Spring Harbore laboratory press, 1989.
  52. Satil F, Selvi S. An anatomical and ecological study of some *Crocus L. taxa* (Iridaceae) from the west part of Turkey. *Acta Bot. Cro.*, 2007; 66: 25-33.

53. Scatena VL, Giulietti AM, Borba EL, Van den Berg C. Anatomy of Brazilian Eriocaulaceae: correlation with taxonomy and habitat using multivariate analyses. *Plant Syst. Evol.*, 2005; 253: 1–22.
54. Schweingruber FH. Stem anatomy of Caryophyllaceae. *Flora.*, 2007; 202: 281–292.
55. Serret MD, Udupa SM, Weigand F. Assessment of genetic diversity of cultivated chickpea using microsatellite derived RFLP markers: implications for origin. *Plant Breed.*, 1997; 116: 573–578.
56. Shirnasabian S, Etminan A, Mohammadi R, Shooshtari L. Molecular variation of improved durum wheat genotypes based on inter-simple sequence repeats fingerprinting. *International J. of Biosciences*, 2014; 5: 222–228.
57. Sofalian O, Chaparzadeh N, Javanmard A, Hejazi MS. Study the genetic diversity of wheat landraces from northwest of Iran based on ISSR molecular markers. *Int. J. Agric. Biol.*, 2008; 10: 466–468.
58. Sofalian O, Chaparzadeh N, Dolati M. Genetic diversity in spring wheat landraces from northwest of Iran assessed by ISSR markers. *Notul. Bot. Hort. Agric., Cluj-Napoca*, 2009; 37: 252–256.
59. Strgulc-Krajsek S, Dermastia M, Jogan N. Determination key for Central European *Epilobium* species based on trichome morphology. *Bot. Helv.*, 2006; 116: 169–178.
60. Teklu Y, Hammer K, Roder MS. Simple sequence repeats marker polymorphism in emmer wheat (*Triticum dicoccon* Schrank): analysis of genetic diversity and differentiation. *Genet. Resour. Crop. Evol.*, 2007; 54: 543–554.
61. Tripathi SC, Sayre KD, Kaul JN. Growth and morphology of spring wheat (*Triticum aestivum* L.) culms and their association with lodging: effects of genotypes, N levels and ethephon. *Field Crops Res.*, 2003; 84: 271–290.
62. Wang QY, Hu CH. Studies on the anatomical structures of the stalks of maize with different resistance to lodging. *Acta Agron. Sin.*, 1991; 17: 70–75.
63. Wang Y, Li CH. The primary research on wheat culm quality. *J. Triticeae Crops*, 1997; 17: 28–31.
64. Wang Y, Li QQ. Studies on culm quality and the anatomy of wheat varieties, *Acta Agron. Sin.*, 1998; 24: 452–458.
65. Wofford BE. External seed morphology of *Arenaria* (Caryophyllaceae) of the south eastern United States. *Syst. Bot.*, 1981; 6: 126–135.
66. Wyatt R. Intra specific variation in seed morphology of *Arenaria uniflora* (Caryophyllaceae). *Syst. Bot.*, 1984; 9: 423–431.
67. Yang W, Olivera AC, Godwin I, Schertz K, Bennetzen JL. Comparison of DNA marker technologies in characterizing plant genome diversity: variability in Chinese sorghums. *Crop Sci.*, 1996; 36: 1669–1676.
68. Yang ZR, Lin Q. Comparative morphology of the leaf epidermis in schisandra (Schisandraceae). *Bot. J. Linn. Soc.*, 2005; 148: 39–56.
69. Zamanianfard Z, Etminan A, Mohammadi R, Shooshtari L. Evaluation of molecular diversity of durum wheat genotypes using ISSR markers. *Biological Forum – An International J.*, 2015; 7: 214–218.
70. Zarrei M, Wilkin P, Ingrouille MJ, Zarre S, Chase MW. The systematic importance of anatomical data in *Gagea* (Liliaceae) from the Flora Iranica area. *Bot. J. Linn. Soc.*, 2010; 164: 155–177.
71. Zietkiewicz E, Rafalski A, Labuda D. Genome fingerprinting by simple sequence repeat (SSR)-anchored polymerase chain reaction amplification. *Genomics*, 1994; 20: 118–176.