

### Measurement of cat's Glomerular Filtration rate (GFR) by Scintigraphy

Gholamreza Assadnassab<sup>1</sup>, Shahram Dabiri Oskoei<sup>2</sup>, Babak Mahmoudian<sup>2</sup>, Ali Rezai<sup>1</sup>, Ali Ashrafi<sup>3</sup>, Masoud Poureisa<sup>4</sup>, Solmaz Rahmanie Barouji<sup>5</sup>

- 1- Department of Clinical Science, Faculty of Veterinary Medicine, Tabriz Branch, Islamic Azad University, Tabriz, Iran  
 2- Department of Nuclear Medicine, Tabriz University of Medical sciences and Health Services, Tabriz, Iran.  
 3- Department of Clinical Science, Faculty of Veterinary Medicine, Malekan Branch, Islamic Azad University, Malekan, Iran  
 4- Department of Radiology, Tabriz University of Medical sciences and Health Services, Tabriz, Iran.  
 5- MD

Corresponding author: Gholamreza Assadnassab

\*Corresponding author's email: [assadnassabgh@iaut.ac.ir](mailto:assadnassabgh@iaut.ac.ir), [assadnassabgh@gmail.com](mailto:assadnassabgh@gmail.com)

**Abstract:** Nuclear medicine has been rapid progress in recent decades. In this method, the administration of radioisotopes to the body and accumulation of these substances in the tissues, specific imaging is obtained, which is based on distribution of gamma radiations exposed from these radioisotopes and recording of them. In this study we aimed to assess the physiological behavior of cat's kidneys by scintigraphy and the results presented for use in future studies. In present study, 12 adult apparently healthy cats were selected. In our investigation, the mean value of total GFR was  $119.36 \pm 4.35$  ml/min in special surface which was consist of right and left kidney's GFR about  $58.21 \pm 2.28$  and  $61.23 \pm 2.09$  ml/min in special surface respectively. There is no significant difference in GFR obtained from right and left kidneys.

[Gholamreza Assadnassab, Shahram Dabiri Oskoei, Babak Mahmoudian, Ali Rezai, Ali Ashrafi, Masoud Poureisa, Solmaz Rahmanie Barouji. **Measurement of cat's Glomerular Filtration rate (GFR) by Scintigraphy.** *Life Sci J* 2013;10(2s):21-24] (ISSN:1097-8135). <http://www.lifesciencesite.com>. 5

**Keywords:** Cat, GFR, Kidney, Scintigraphy.

#### 1. Introduction

Renal scintigraphic imaging is very important in nuclear medicine. In addition to the structural composition of the kidney, the physiological function of the kidneys reveals. Also, can be detected most of the kidney's severe disease (Chow et al., 2006; Ettinger and Feldman, 2009; Henkink et al., 1996; Sutton, 1998). Considering that kidneys are one of the very important body organs which with their physiological functions, excrete toxins and maintain the body water. Nuclear medicine has been rapid progress in recent decades. In this method, the administration of radioisotopes to the body and accumulation of these substances in the tissues, specific imaging is obtained, which is based on distribution of gamma radiations exposed from these radioisotopes and recording of them. Nowadays, the gamma cameras are used in nuclear medicine centers for this purpose. In this study we aimed to assess the physiological behavior of cat's kidneys by scintigraphy and the results presented for use in future studies. Imaging of renal function includes assessment of blood flow, parenchyma and discharge of organs. The radioisotopes used in diagnostic imaging (Henkink et al., 1996; Armstrang, 1999; Hecht et al., 2008).

Gamma radiations, which is made by isotopes, are hit to detector made of large crystal of iodine and potassium as activator and are converted directly to light energy or photons. The picture shows the spatial distribution of isotope in the kidney called scintigram. Immediately after intravenous injection of a small amount of radioisotope scan makes. Scintillating counter is placed on each of the kidneys on the skin and both before and after injection of the radiopharmaceutical agent, the study will be done (Henkink et al., 1996; Mettler, 1998). Scintigraphic images all show the spatial distribution of the radiopharmaceutical agents. Complications such as non-symmetric imposes exchange the kidneys, delayed absorption of radioactive material in the pelvis and uniform parenchymal may be important in diagnosis. Time-activity curves were obtained by gamma non-visual probes called renogram. Today, computers and gamma cameras facilitate obtaining of scintigraphic images and production time - activity curves by drawing lines and marking specific areas. All the renal failures associated with the excretion of the kidneys, renal tubular failures and failures associated with the renal perfusion can be detected by renogram (Blaufox, 1991; Bowen et al., 1994; Dahlager and Bilde, 1980; Wilkinson et al., 1978). Various intermediates labeled with technetium-99m,

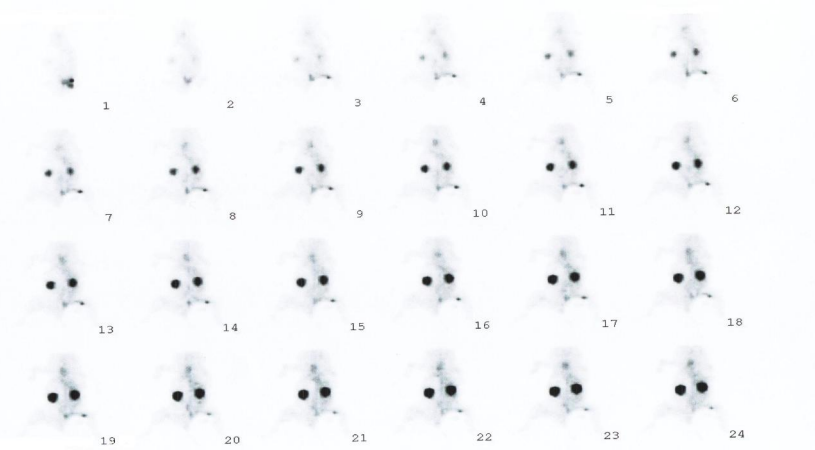
which normally are used in all imaging includes: diethylenetriaminepentaacetic acid, 2,3-Dimercaptosuccinic Acid (DMSA) and Glucoheptonate (Chou and Hsu, 1991; Henkink et al., 1996; Mettler, 1998; Liu et al., 2002). Technetium  $^{99m}$ diethylenetriaminepentaacetic acid is known as a chelating complex made of reduced diethylenetriaminepentaacetic acid. Chelating agents make complexes with radioactive or non-radioactive materials. Measurement of GFR needs to radiopharmaceutical agent which cannot attach to the protein and do not secreted or absorbed by the tubules.  $^{99m}$  TC -DTPA has above mentioned properties and being tracked by cameras order to accumulate a sufficient number of photons is contained in its structure. Filtration pressure is net pressure that pushes fluid through the Glomerular membrane to out and is equal with Glomerular pressure minus summation of Glomerular colloid and capsular pressures. In the kidneys, a liquid similar to the Glomerular capillary plasma filtered into the renal tubules that process is called Glomerular filtration. As filtered fluid (Glomerular filtrate) passes through the tubules, it reduced in volume and composition through the tubular reabsorption processes (absorption of water and soluble substances from the tubular fluid) and tubular secretion (discharge of material into the solution tubular fluid) altered. And finally, consisted urine enters into the pelvis. By comparing the composition of plasma and urine together, as some of these changes can be realized. Thus, the route of maintenance of water, electrolytes and body important metabolites and also excretion of waste disposal reveal. Several renal diseases made different disturbances that some of them are similar in different diseases (Mettler, 1998; Liu et al., 2002; Smith and Their, 1989; Ettinger and Feldman, 2009).

## 2. Materials and methods

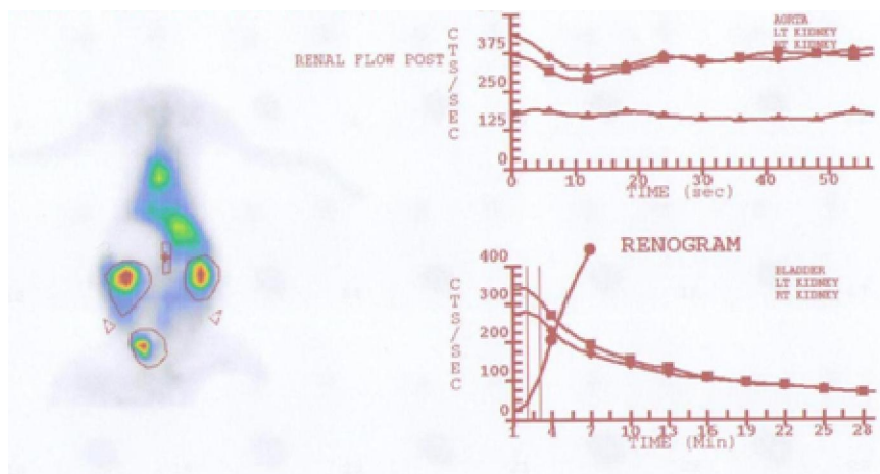
In this survey we used of double-detector ADAC apparatuses model Vertex. These apparatuses were calibrated and special software was designed. 12 adult apparently healthy cats were selected. Blood examinations such as Cr, Bun, CBC were done for assurance of kidneys normality. Height and weight of animals also were recorded. For scintigraphy, animals were taken under anesthetic condition and were recumbency on back. Later on,  $^{99m}$  TC-DTPA was injected from femoral vein as bolus at the 2 mCi. Mie was the name of counter machine. During the action, one person was careful to constantly move that the animal does not carry out operations to disrupt the scan. Scintillator was set under the table near the kidneys. After rapid injection of radioactive agent by an insulin syringe, imaging started. Secondary activity of the insulin syringe after injection was measured by the counter device. Animals were anesthetized by Ketamine at the 10mg/kg as main drug and Acepromazine 0.05mg/kg as pre-anesthetic drug (Adams, 2001; Hall et al., 1998). For better to count on the animal's injection site was considered as a lead guard. Immediately after injection, dynamic scanning was started. The computer program was set so that images of angiophase at 1 minute and other images scans were used in subsequent periods and total duration was 30 minutes of renal nuclear imaging. Renogram was drawn by computer in regions outline interest (ROI) mode. Then GFR was measured by Gates method by computer, all renograms were printed and recorded for further studies. Finally, GFR of right and left kidneys were compared by T-test.

## 3. Results

Figure 1 shows sample of captured dynamic scan by ADAC gamma camera. Figure 2 also shows renography obtained from it.



**Figure 1:** Renal scan obtained from ADAC gamma camera



**Figure 2:** Renogram obtained from renal scans by ADAC gamma camera

In our investigation, the mean value of total GFR was  $119.36 \pm 4.35$  ml/min in special surface which consist of right and left kidney's GFR about  $58.21 \pm 2.28$  and  $61.23 \pm 2.09$  ml/min in special surface respectively (table 1).

**Table 1:** Data obtained from measurement of GFR of right and left kidneys.

Kidneys	Mean	Standard deviation
Right	58.21	2.28
Left	61.23	2.09

#### 4. Discussion

Size, shape and position of the kidneys are possible by radionuclide imaging. Scintigraphy has been proposed and used in evaluating the functional and physiological activities (Annet et al., 2004; Ertay et al., 2005; Ettinger and Feldman, 2009; Hecht et al., 2008). Scintigraphy is used in the animals (Barthez et al., 2006; Bowen et al., 1994; Dahlager and Bilde, 1980; Wilkinson et al., 1978) especially on cats (Barthez et al., 2006; Hecht et al., 2010; Hecht et al., 2008). Renal scintigraphy is done in cats for many purposes. Our results, also confirmed reports by other researchers, conducted at the cats scintigraphy of kidneys know that is consistent with reports by researchers in this field (Dahlager and Bilde, 1980; Ettinger and Feldman, 2009; Hecht et al., 2008; Wilkinson et al., 1978).  $^{99m}\text{Tc}$ -DTPA can be used in the kidneys scintigraphy (Auwawanne, 1995; Chen and Hoffer, 1990; Chou and Hsu, 1991; Liu et al., 2002). In the cat study also revealed that this drug can be used in scintigraphy of all the animals, which compatible with the findings of other researchers (Dahlager and Bilde, 1980; Ertay et al., 2005; Hecht et al., 2008, Hecht et al., 2010; Wilkinson et al., 1978). The use of this drug, reports of side effects like kidney failure to respond to this medication,

allergic and fatal side effects not being observed. In our investigation, the mean value of total GFR was  $119.36 \pm 4.35$  ml/min in special surface which consist of right and left kidney's GFR about  $58.21 \pm 2.28$  and  $61.23 \pm 2.09$  ml/min in special surface respectively which is align with results of other researches. In this study, the GFR of right kidney compared with the left kidney was not significantly different ( $P > 0.05$ ). Renal scintigraphy reveal the anatomical structure and physiological functions of kidneys which is reported previously. Even with assessment of the scanned images, it seems that scintigraphy can identify certain diseases of the kidney which is supplementary in accurate diagnosis and is compatible with reports by other researchers (Bowen et al., 1994; Ettinger and Feldman, 2009; Henkink et al., 1996; Smith and Their, 1989). The investigation revealed, scintigraphy of cat kidneys many similarities with human kidney scintigraphy (Henkink et al., 1996; Sutton, 1998) and computer programs such as scanning and collecting of images and drawing ROI in this animal also applied to be a particular and does not problem created. In assessment of obtained scans it revealed that accounting the radioactive agents is achievable and is done easily by computer programs of gamma cameras. The present study revealed the GFR can be considered as a method of using this technique and can be calculated by computer programs. In addition, drawing of cat's kidney renogram is performable by computer programs and applications of this technique in cats are possible and have no problem. Drawing of cats renogram like human kidney (Blaufox, 1991; Chou and Hsu, 1991; Mettler, 1998) is done by the ROI method is applicable and available. Execution and time steps of scintigraphy by computer in cats are similar with those done in humans and can be assay by especial programs. Scintigraphy considers as a

method useful in diagnostic imaging and veterinary science. And from animals like cat can be used in medical research work and veterinary medicine as a specific animal models used in nuclear medicine research. The use of nuclear medicine techniques in animals can be very useful in researches.

#### Acknowledgement:

The authors would like to thank the Tabriz Branch, Islamic Azad University, Research Department and Dr. Dabiri nuclear medicine center and Gama scan center.

#### References:

1. Adams HR. Veterinary Pharmacology and Therapeutics, 8<sup>th</sup> ed., Iowastate University, Ames 2001; pp:413-416, 445,472-475.
2. Annet L, Hermoye L, Peeters F, Jamar F, Dehoux JP. Glomerular filtration rate: assessment with dynamic contrast-enhanced MRI and a cortical-compartment model in the rabbit kidney. *Van Beers BE J Magn Reson Imaging* 2004;20(5):843-9.
3. Armstrong P. Diagnostic Imaging, 4<sup>th</sup> ed., Mosby Chicago 1999; pp:234-240.
4. Awuawanne A. The hand book at radiopharmaceuticals, 1<sup>st</sup> ed., Champan and hall, London 1995; pp:110-157.
5. Barthez PY, Schaafsma IA, Pollak YW. Multimodality image fusion to facilitate anatomic localization of 99mTC-pertechnetate uptake in the feline head. *Vet Radiol Ultrasound* 2006;47(5):503-6.
6. Blafox M. Procedures of choice in renal nuclear medicine. *J Nucl Med* 1991;32:1301-1309.
7. Bowen J, Sharma H, Gough DC. Chronic hydronephrosis: renographic drainage patterns and renal morphology in an animal model. *Br J Urol* 1994;74(1):26-30.
8. Chen C, Hoffer P. A simple method of renal scintigraphic analysis with 99m TC-DTPA and captopril. *Radiology* 1990;176(2):365-369.
9. Chou YH, Hsu CP. Age factor in compensatory hypertrophy of the kidney evaluated by 99mTc-DTPA renography. *Urol Int* 1991;46(2):126-8.
10. Chow PL, Stout DB, Komisopoulou E, Chatziioannou AF. A method of image registration for small animal, multi-modality imaging. *Phys Med Biol* 2006;51(2):379-90.
11. Dahlager JI, Bilde T. The 125I-Hippuran renogram in rabbit kidneys after graded warm ischaemia. *Scand J Urol Nephrol* 1980;14(1):85-90.
12. Ertay T, Unak P, Tasci C, Zihnioglu F, Durak H. Scintigraphic imaging with 99mTc- exorphin C in rabbits. *Appl Radiat Isot* 2005;62(6):883-8.
13. Ettinger A, Feldman EC. Textbook of Veterinary Internal Medicine, W.B.Saunders, 7<sup>th</sup> ed., London 2009;pp:138-177, 213-220.
14. Hall LW, Clarke KW, Trim CM. Veterinary anesthesia, W.B. Saunders, 10<sup>th</sup> ed., London 1998;pp: 63-477.
15. Hecht S, Lane IF, Daniel GB, Orandi F, Sharp DE. Diuretic renal scintigraphy in normal cats. *Veterinary Radiology & Ultrasound* 2008;49(6):589-594.
16. Hecht S, Lawson SM, Lane IF, Sharp DE, Daniel GB. 99mTc-DTPA diuretic renal scintigraphy in cats with nephroureterolithiasis. *J Feline Med Surg* 2010;12(6):423-30.
17. Henkink R, Boles M, Dillehay G. Nuclear Medicine, Mosby – year book, St Louis 1996; pp:1055-1090.
18. Liu G, Zhang C, Liu F, Wang R, Fu Z, Li G, Miao Z. 99mTc-N, N'-bis (aminoethyl) propanediamine hexaacetic acid (BPHA): a Glomerular filtration agent similar to 99mTc-DTPA. *Nucl Med Biol* 2002;29(4):399-404.
19. Mettler F. Essentials of Nuclear Medicinine Imaging, 4<sup>th</sup> ed., Saunders, Philadelphia 1998; pp:335-356.
20. Smith A, Their D. Kidney Pathology, Lippincott, Philadelphia 1989; pp:100-197.
21. Sutton D. Nuclear Medicine in radiology and imaging for medical students. Churchill living stone, Edingburgh 1998; pp:142.
22. Wilkinson SP, Bernardi M, Pearce PC, Britton KE, Brown NJ, Poston L, Clarke M, Jenner R, Williams R. Validation of transit renography for the determination of the intrarenal distribution of plasma flow: comparison with the microsphere method in the anaesthetized rabbit and pig. *Clin Sci Mol Med* 1978;55(3):277-83.

1/15/2013