

Prevalence of cancers in the National Oil Company employees referred to Ahwaz health and industrial medicine in 5 years (Ministry of oil)

Kalantari Farhad¹, Sarami Abdollah², Shahba Nariman³, Marashi seyed Kamal⁴ Reza Shafiezhadeh⁵

1- Anesthesiologist 2- Infectious & MPH specialist 3- Dermatologist 4-pharmacist 5- occupational medicine
Department of health and great oil hospital

Abstract: 13% of cancer deaths are, According to Association of America 7. 6 Million People died of cancer in 2007. Cancer is not only a special man and all animals and plants, a cell may also be suffering from cancer. In 2000, six million to ten million new cases of cancer and cancer-related deaths in the world was registered. In America every year for the first time in nearly a half million people are realizing that somehow have been affected by cancer. According cancer kills 556,000 people in 2003 was 1,500 times the daily death and only death from cardiovascular disease with its prevalence is over. In the study (14,957 people) between 2007 to 2011 employees working in the oil industry in Ahwaz on cancer registration in great oil hospital and public health medicine and the oil industry before 5 years were 121 cancer cases were reported from .The commonest cancers are adenocarcinomas, 36 body parts (29.7%), basal cell skin cancer, 26 patients (21.4%), bladder transitional cell carcinoma 12 (9.9%) and squamous cell carcinoma of the number 7 (5.7%) and 2 cases of renal cell carcinoma were reported. 121 cases of cancer reported in eight cases (6.6%) women and 113 (93.3%) were male.

[Kalantari Farhad, Sarami Abdollah, Shahba Nariman, Marashi seyed Kamal, Reza Shafiezhadeh. **Prevalence of cancers in the National Oil Company employees referred to Ahwaz health and industrial medicine in 5 years (Ministry of oil)**. Life Science Journal. 2011;8(4):698-700] (ISSN:1097-8135). <http://www.lifesciencesite.com>.

Key words: cancers, Prevalence, industrial medicine

1. Introduction

Abnormal growth of malignant cancer cells, it also called to say that the proliferation of abnormal cells or cancer occurs when cells die, they lost. All body tissues such as cancers of the lung-colon - breast - skin - are the source of the bone and nerve tissue. Among the causes of cancer can be contacted with benzene, viruses, radiation, sunlight, and tobacco and food toxins aflatoxin and named. Human of cancer at different ages, but there is a high risk of cancer increases with age. 13% of cancer deaths are.

In 2007 died 7. 6 Million People of cancer (According to America health Forum). Cancer is not only a special man and all animals and plants, a cell may also be suffering from cancer. In 2000, six million to ten million new cases of cancer and cancer-related deaths in the world was registered. In America every year for the first time in nearly a half million people are realizing that somehow have been affected by cancer. According cancer kills 556,000 people in 2003 was 1,500 times the daily death and only death from cardiovascular disease with its prevalence is more than. The most common tumors in men with prostate cancer, lung and colon and in women are breast, lung and large intestine.

Cancers of the lung, breast, prostate and colorectal cancers diagnosed as the cause of more than 50 percent of cancer deaths in America are included. Over the past 50 years, the overall death rate from cancer is significantly associated with age in men increased while the proportion of women has decreased

slightly. Most of this increase due to lung cancer in men than in women, but this improvement can be clearly reduced mortality from cancers of the uterus, stomach, liver and cervical cancer in women above all linked.

Significant differences were in incidence and mortality from cancer in the world there. For example, the death rate from gastric cancer in Japan 7 to 8 against America.

1.1. Types of cancers

Lung cancer is the most common cause of death from cancer in the world of the most common cancers, including prostate cancer in men - lung and colon adenocarcinoma in different parts of the digestive tract, most notably made up 12 of them were related to colon (33.3%) and Gastric 9 cases (25%) and prostate (6) (6 / 16%) is included. Only one case of lung cancer was included. In women most common cancers, breast cancer - colon and lung is. In this study, 5 cases of breast cancer were reported by colleagues working in the hospital and its 4 Invasive ductal carcinoma is the most common pathology.

A case of uterine cancer (leiomyosarcoma) and 2 cases of BCC skin were reported. Lowest among patients with Hodgkin lymphoma aged 34 years and maximum age was 87 years old colon adenocarcinoma. and both of which were reported in men

The aim of the study

Identify the most common types of cancer and risk factors in decisions to reduce the cause are.

2. Result

The study found that gastrointestinal cancers as colon and gastric adenocarcinoma accounted for most of that is very similar to Japan and may be involved in that type of diet is more knew that I needed studies. These cancers are reported rarely in the United States.

Papillary carcinoma of thyroid and other cancers have been reported in 4 cases (3.3%) - 12 cases of bladder transitional cell carcinoma (9.9%) - mesothelioma 3 (2.4%) - 7 cases of squamous cell carcinoma (5.7%)

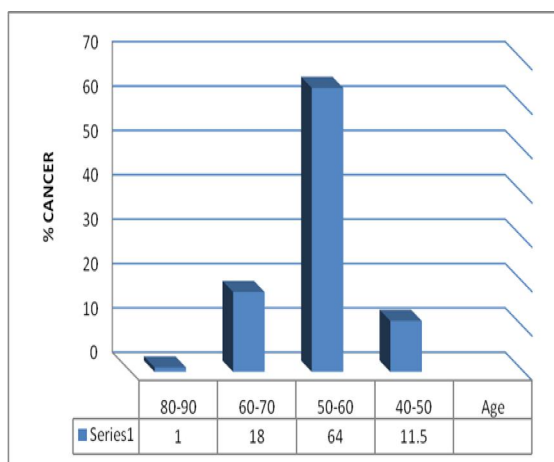


Fig1. The most common age at which the cancers reported.

Unfortunately, cancer patients who have advanced stage and this led to poor results achieved in spite of drug therapy is expensive and advanced nursing care. Therefore recommended screening tests according to international standards Cancer Society is a necessary and inevitable.

3. Discussion

Increasing age increases the likelihood of developing certain cancers. Most cancers occur in aged about 55 years or more. The main cause of cancer death among women 40 and men 60 to 79 years To 76years. Cancer in children less than 15 years will also suffer. More than 10 percent of cancer deaths in this age group are in America.

The issue is power, and now many patients who have used this method and compliance with health issues and healthy eating have been able to recover, but also because of avoiding bad and wrong ways to live with this disease, the procedures again return to health have regained their.

Results show that 59.1% of patients with esophageal cancer in Iran were male and mean age of patients was 62.2 years. In both sexes the prevalence of esophageal cancer in the age group 69-60 years was higher than other age groups. 1 and 5-year survival rate in patients were have seen with esophageal cancer by 42 percent and 8 percent respectively. The survival rates according to age and sex, there was a statistically significant difference ($P = 0.01$, $p = 0.02$). So that female patients, with less than 50 years of age had significantly better survival. 1 to 5-year survival rates according to histological type, anatomic location, and treatment did not show significant differences.

The most common site of breast cancer in women is related to the first cause of cancer deaths in America is the same cancer. This type of death from cancer, aged 40 to 44 years is more than deaths from other causes. In the United States every nine women will develop breast cancer in her lifetime and one in 31 women die of the disease, i.e., the women in America each year, more than 44 thousand people die of this cancer. Due to the high death rates in the diagnosis and treatment of this disease is more precise. Rapid and early detection of breast cancer death rate is dramatically reduced. However, a death rate from cancer of the body part that is easily accessible for examination and diagnosis is a pathetic and sad and irreparable damage to the corpus of the family and society. If you aspects of the breast cancer the family aside, the rest of this disease rarely occurs before age 25, but with increasing age, the incidence of cancer is also increased.

The influence of environmental factors on breast cancer studies has been the geographic differences in the genetic groups identified in this cancer has been effective, the risk of the disease in immigrants to America's increased attention to the historically occurrence of breast cancer in the United States and other countries of the West 7 4. Radiation is another environmental factor that is mainly used for the upper parts of the waste treatment and complications of cancer patients from radiation are radioactive materials.

Considering that breast cancer has a variety of different races tends to be different and specific stages of the disease have. Although the overall incidence of breast cancer in black than white race, but usually referring to black women in more advanced stages and higher mortality rates than whites are. Part of this difference relates to the exclusion of blacks and their lack of access to health care and lack of diagnostic facilities such as a mammogram is important, but genetic factors also can be effective, however, there is clearly a genetic predisposition.

4. Conclusion

The results of this study indicate that esophageal cancer is not a good prognosis and a 5-year survival rate of esophageal cancer in this study with studies in North America and European countries have agreed, but the studies made in China and Japan is weaker than the survival rates (Hajian and Sadeghi, 2000).

The relative frequency of colon and rectum Cancers were 62% and 38%, respectively. Ninety percent of Cancers were adenocarcinoma while 7% were lymphoma and 3% were carcinoid tumor. Sixty one percent of patients were male and 39% were female. The prevalence of colorectal Cancer in general population was 7 / 100000 during 1995-1999. The most common age of colorectal Cancer was above 60 years old. The mean age of the patients was 50 years old. The range of patient`s age was between 4 to 93 years. Most patients were diagnosed in 1999 (30 cases). Colorectal Cancer had relatively high incidence rate in Kurdistan province in our study. We recommend detecting risk factors for colorectal Canecrs here Further Evaluation (Dr Najmedin Molanaie, Dr Ezatollah Rahimi and Dr Soada Aiobi).

Reference

1. Vinay Kumar, Abul K. Abbas, Nelson Fausto, Nelson Fausto. Robbins & Cotran Pathologic Basis of Disease. the seventh chapter, 7th edit ISBN-the thirteenth: the 9,780,721,673,356 th
2. Kinzler KW, Vogelstein B (2002) Genetic Basis of Human Cancer. McGraw-Hill.
3. Kurzrock R, Talpaz M (1999) Molecular Biology in Cancer Medicine. Pearson education, Harlow
4. Lakshmi MS, Sherbet GV (1997) Genetics of Cancer: Genes Associated With Cancer Invasion, Metastasis and Cell Proliferation. Academic Press, London.
5. McDonald F, Ford CHG (1997) Molecular Biology of Cancer. Springer-Verlag New York, Incorporated
6. Epidemiology of Colorectal Cancer in Kurdistan province during 1995-1999
7. Journal of Babol University of Medical Sciences, Winter 2000, 3 (1 (9)) :21-28.
8. Schwartz seymour L, and et al. Principles of surgery. McGRAW - Hill, INC. 6th Edition, 1994: 1259-1300.
9. Sabiston David C. Text book of surgery. W.B.Saunders compony. 14 th ed. 1993: 944-957.
10. Nelson RL, Persky V, Turyk M. Tuneatrebds in distal colorectal cancer subsite location relered toage and how it appears choice of screening madolity. J Surgery oncl. 1998 Dec, 69(4): 235-8
11. Small w, Ray WA, Dougherty j, et al. Use of NSAID and incidence of colorectal cancer. Arch Intern Med. 1999 jan 25, 159(2): 161-6
12. Nelson RL, Dikkear T, Freds S. et al. The relation of age, race and gender to the subsite location of colorectal carcinoma. Cancer. 1997 jul 15, 80(2): 193-7
13. Soliman As, Bondy ML, Levin B, etal. Colorctal cancer in Egyption patients under 40 years of age. Int J cancer. 1997 Mar 28, 71(1): 26-30
14. Bell Jc, Mc cried M, Coats Ms, et al. Trends in colorectal cancer incidence and mortality in new sough woles. Med J Aust. 1997 Feb 17, 166 (4): 178-8

11/20/2011